



CINDI[®] BASIC

Art.no 1229-02

CINDI[®] Basic is the latest addition to our family of incinerating toilets and is an option for those who want to have it "Basic", easy and simple. With a single program selection and a single button, you never have to think about which button to press to start an incinerating program. CINDI[®] Basic informs you of what state it's in or if it requires any special attention via a button and a series of light signals. It also announces when any action is required, which can be read by a code that appears on the display on the side of the toilet, for example, emptying of the ash pan, cleaning of smoke pipe or any malfunction.

CINDI[®] Basic has capacity for a household with up to six people. It is adapted for holiday homes.

EASY TO USE



FLUSH

Place the bag on the flap under the toilet seat. When you've done your business use the flush lever.



START INCINERATION

Push the button and the incineration starts.



EMPTY THE ASH PAN

Remove the front cover, pull out the ash pan and empty it.



EVERYONE CAN USE CINDI

Sally child seat makes the toilet visit comfortable even for the smallest members of the family. (not included).

EASY TO CLEAN

In addition to normal cleaning with a damp cloth, the flashing button together with the display on the back of the toilet will show when it is time to clean the ash pan. This is done by emptying the ash first, then pour 1 liter of water into the potty and finally start a program. It also tells when the smoke pipe needs to be sooted, using the cleaning brush that comes with the toilet.

INCLUDED WITH THE CINDI[®] BASIC

- Long bend Ø110 mm 90° - Cleaning brush - Dim. drawing
- 100 pcs bags - Vent cowl - Chisel - O-rings - Extra fuses

SUPPLEMENT WITH

- 1218-01 Bag holder* - 1199-01 Cleaning kit** - Installation material***



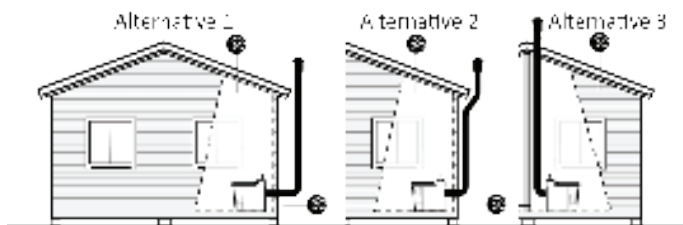
* The bag holder makes the use of the CINDI[®] Basic easier by ensuring that disposable bags are easily accessible during the visit.



** The cleaning kit contains everything you need to keep the incinerating toilet clean and fresh and ensure the function over time.

INSTALLATION

To achieve a good incineration, it is important that the CINDI[®] Basic is installed correctly, according to the enclosed installation instructions. There are three alternative installations, all of which require that at least one of the walls in the space is an outside wall, choose the option that suits your requirements. *We recommend that a separate residual current device installed.*



1. The distance between the pipes shall be at least 100 mm and the distance between the pipes and the wall shall be at least 100 mm. The distance between the pipes and the wall shall be at least 100 mm. The distance between the pipes and the wall shall be at least 100 mm.

*** You'll need the following installation materials

Alternative 1 & 2:

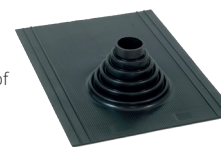
- 1181-01 Ventilation kit incinerating

Alternative 3:

- 1181-01 Ventilation kit incinerating
- 1092-01 Roof flashing, tarred/tiled roof

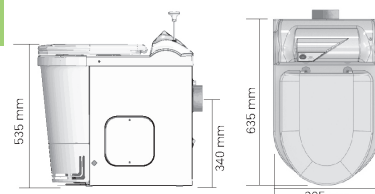


Included in the ventilation kit:
 - 4 m pipe (4x1m) - 2 pcs 45° connectors
 - 3 pcs connector pipes - Wall brackets
 - Silicone - Fresh air vent 150x150 mm



TECHNICAL DATA

CINDI [®] BASIC	Material	Inner container	Voltage/Wattage	Energy Consumption	Electricity Connection	Noise level fan	Pack. size/weight
	Recyclable ABS. White enamelled galvanised plate	Inner part: Stainless plate. Ash box: Acid-proof plate	230 V, 1,8 kW 10 amp. fuse	0,6-2,4 kWh/visit	2,5 m cord with grounded plug	Ca 55 dB(A) 150 kg	L:77 W:46 H:73 cm 42 kg



Connections

Ventilation out from the toilet: Ø110 mm

Ventilation in to the space where the toilet is installed: Ø110 mm/160 mm depending on the position.

Warranty 3 year

The 3-year warranty does not include wear parts. These have an individual warranty period. Element 1 year, ash pan 2 years, thermo coupling 2 years.



All our electrical products are ETL and/or CE marked. Further information about the products can be found on our website, www.separett.com

Separett[®]
Waterless toilets